



HIV & STI IN BELGIUM: LATEST TRENDS TO END 2022

Deblonde J, Serrien, B, De Rouck M, Lecompte A,
Montourcy M, Van Beckhoven D

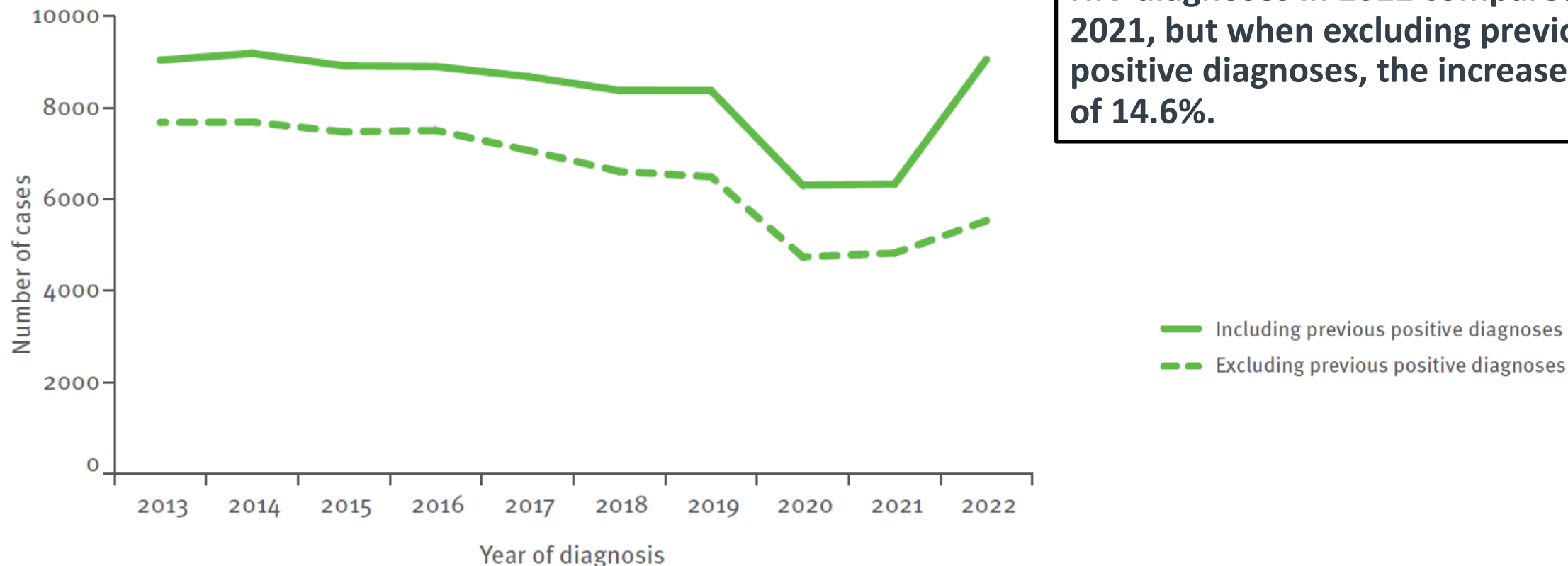
BREACH symposium 30 November 2023

Definitions: Newly vs Previously diagnosed

- **Newly diagnosed persons**
 - First-time HIV diagnosis
 - No data on HIV diagnosis or care before (abroad)
- **Previously diagnosed persons (pre-existing diagnoses)**
 - HIV diagnosis or care in another country before confirmation in Belgium
 - *Unlikely to reflect transmission in Belgium*
 - *Not preventable by public health measures in Belgium*

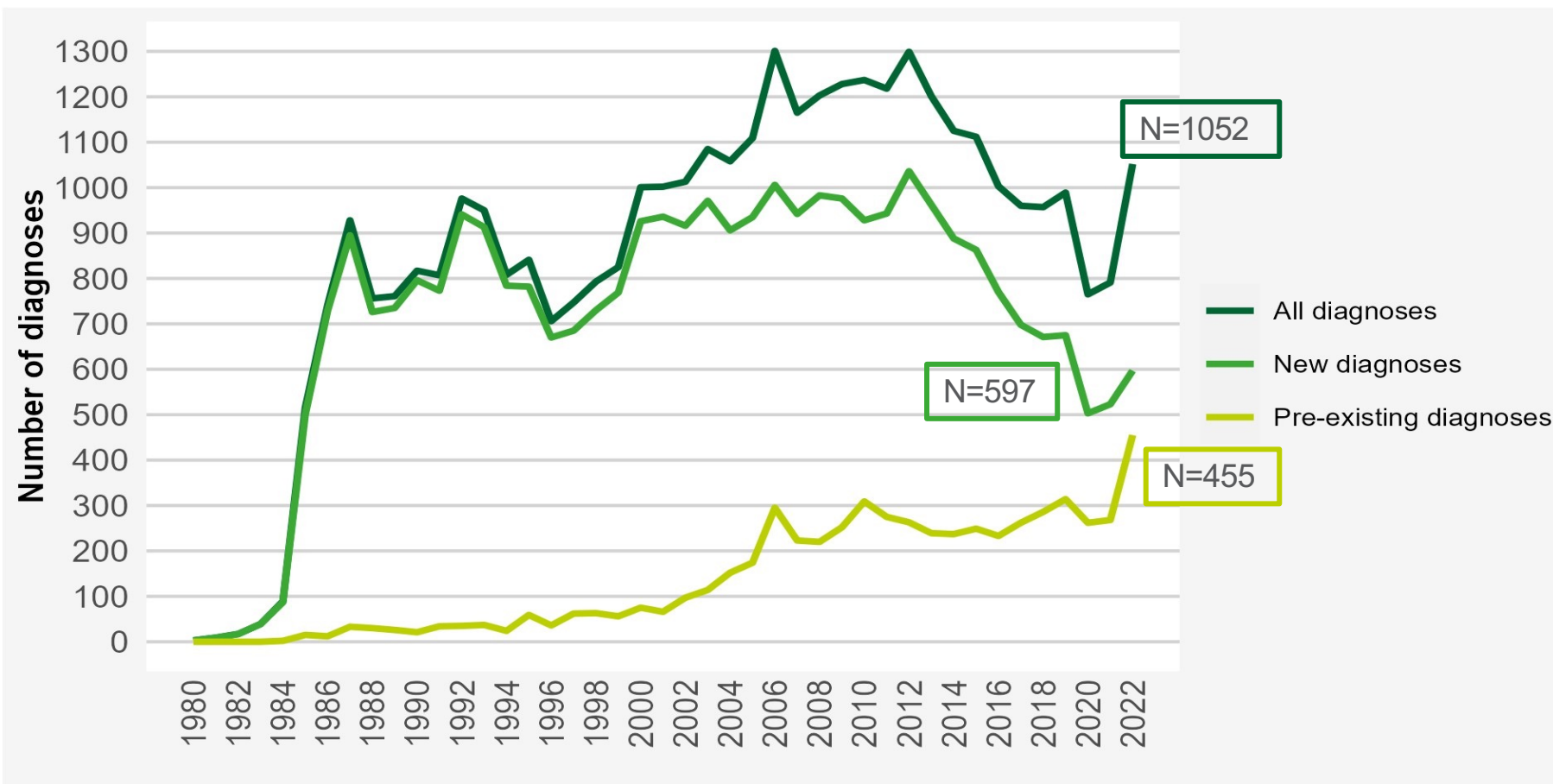
Temporal trends in HIV diagnoses reported by 14 EU/EEA countries, 2013–2022

There was a 63.7% increase in overall HIV diagnoses in 2022 compared to 2021, but when excluding previous positive diagnoses, the increase was of 14.6%.



Notes: The data for HIV cases reported in 2022 from the following EU/EEA countries have been included in this figure: Belgium, Croatia, Cyprus, Czechia, Denmark, Estonia, Finland, France, Iceland, Ireland, Norway, Slovakia, Slovenia, and Sweden.

Trends in HIV diagnoses: total - new – previous, 1980-2022

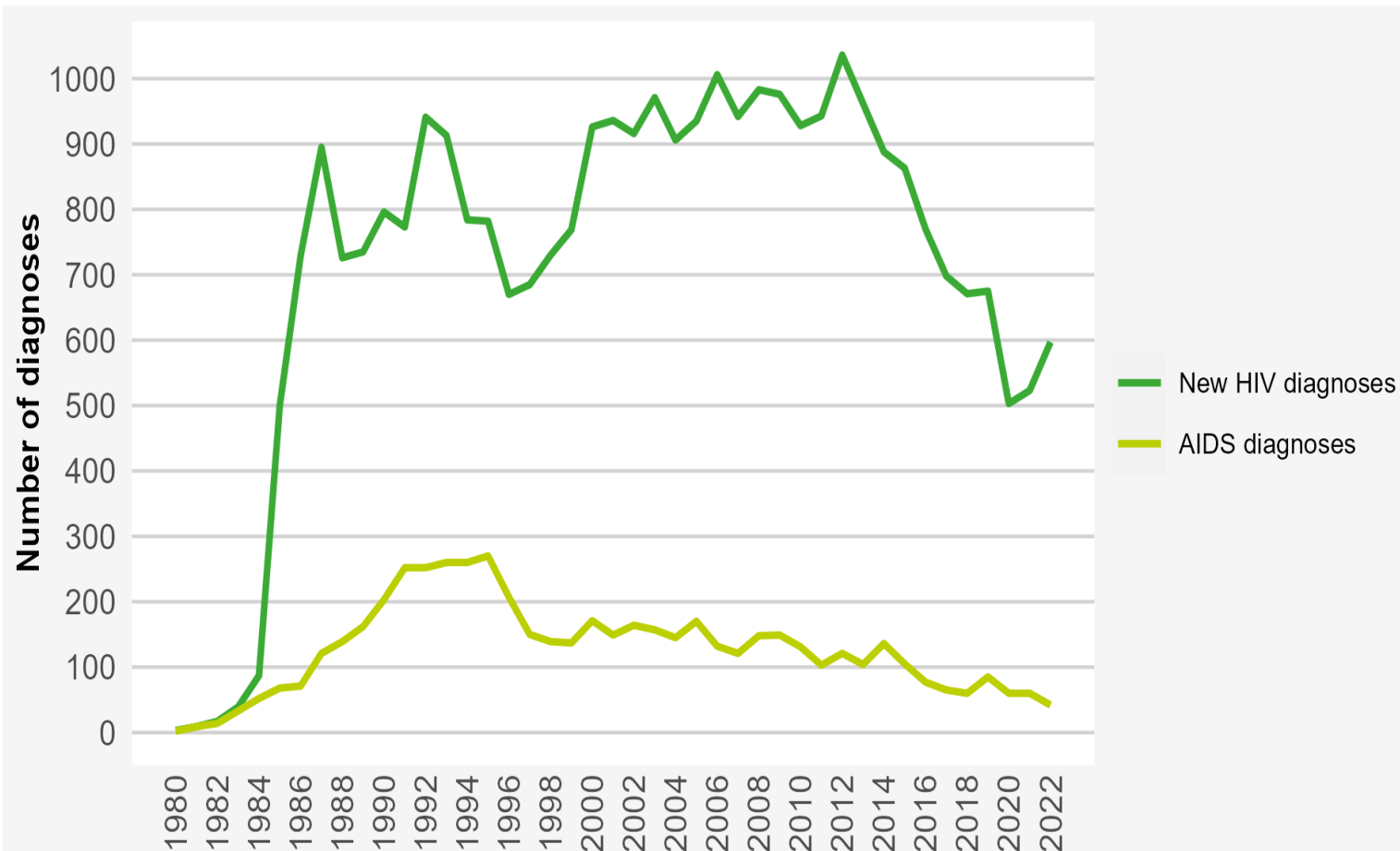


Of all HIV diagnoses in 2022:

57% New

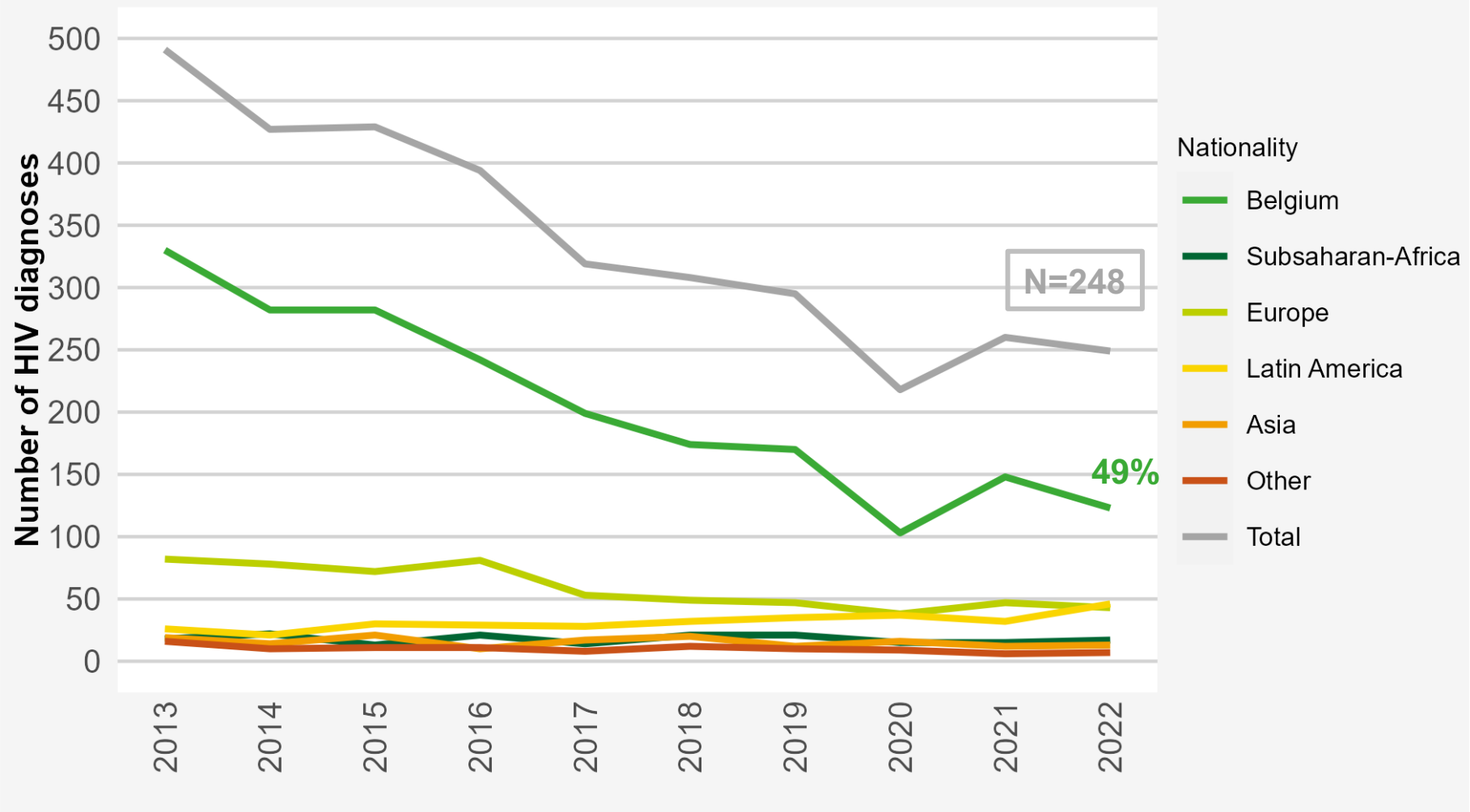
43% Previous

New HIV diagnoses & AIDS cases per year, 1980-2022

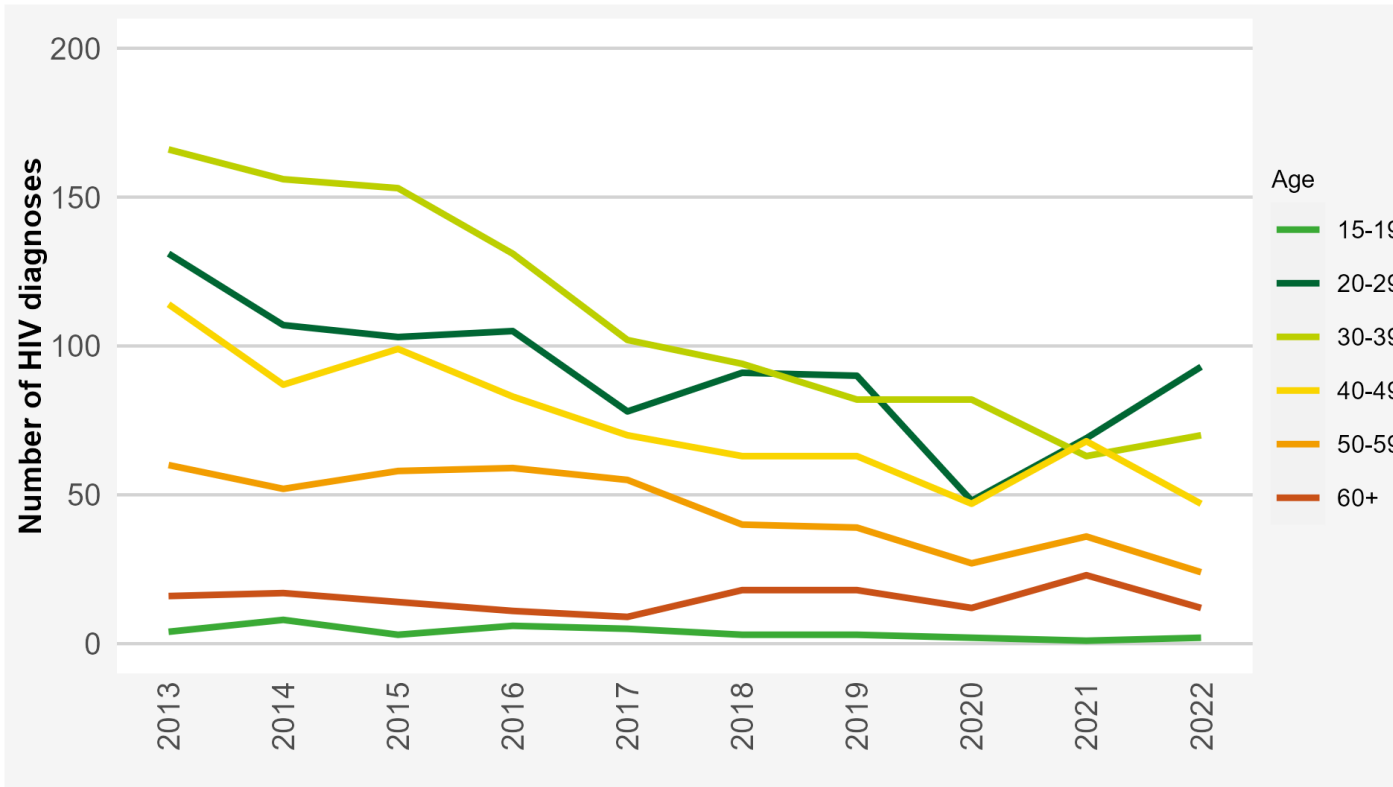


- **597** new HIV diagnoses in 2022
- + 14% vs 2021
- 12% vs 2019 (pre-pandemic)
- **43** AIDS cases

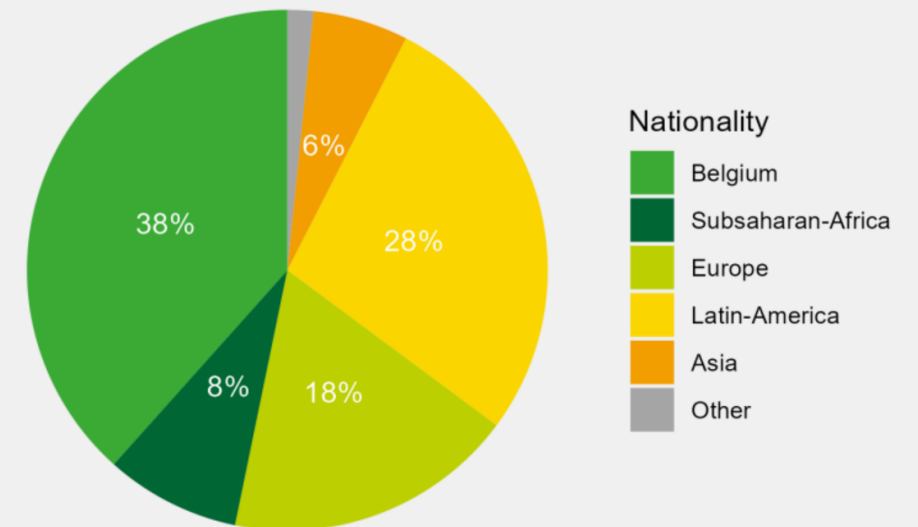
Number of new HIV diagnoses among MSM by nationalities (grouped) and overall



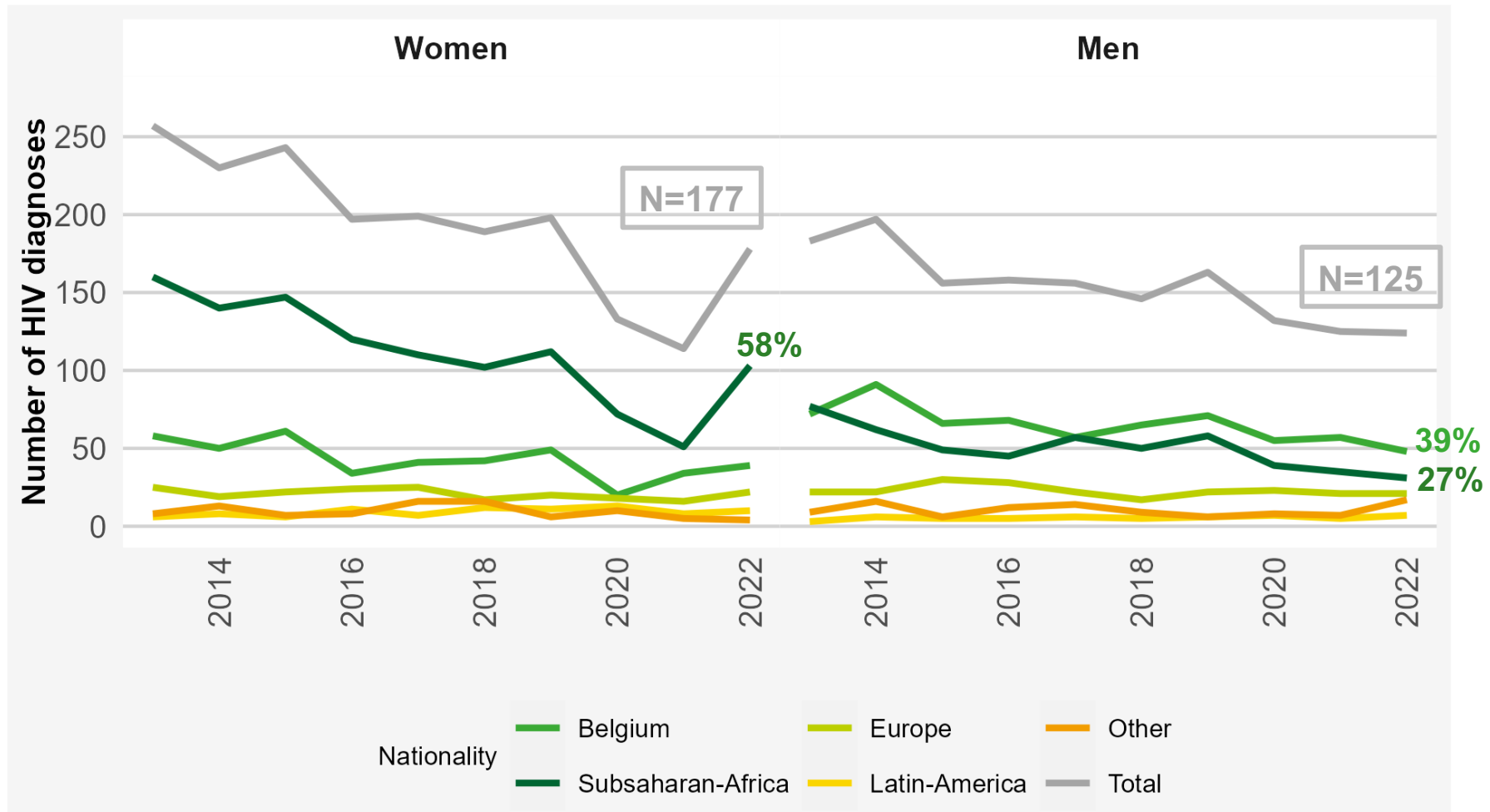
Number of new HIV diagnoses among MSM by age group



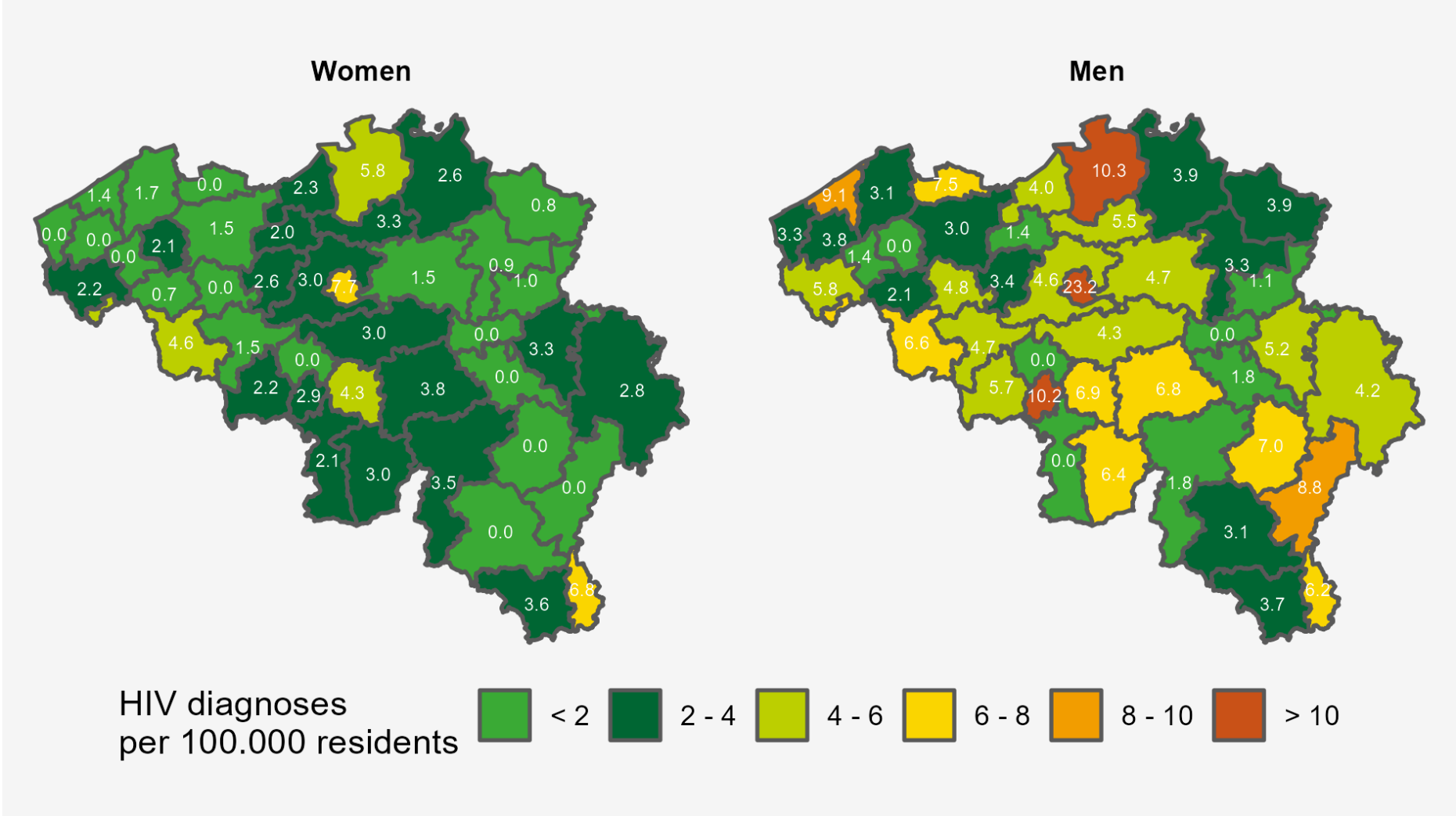
Nationalities, MSM 20-29 years, 2022



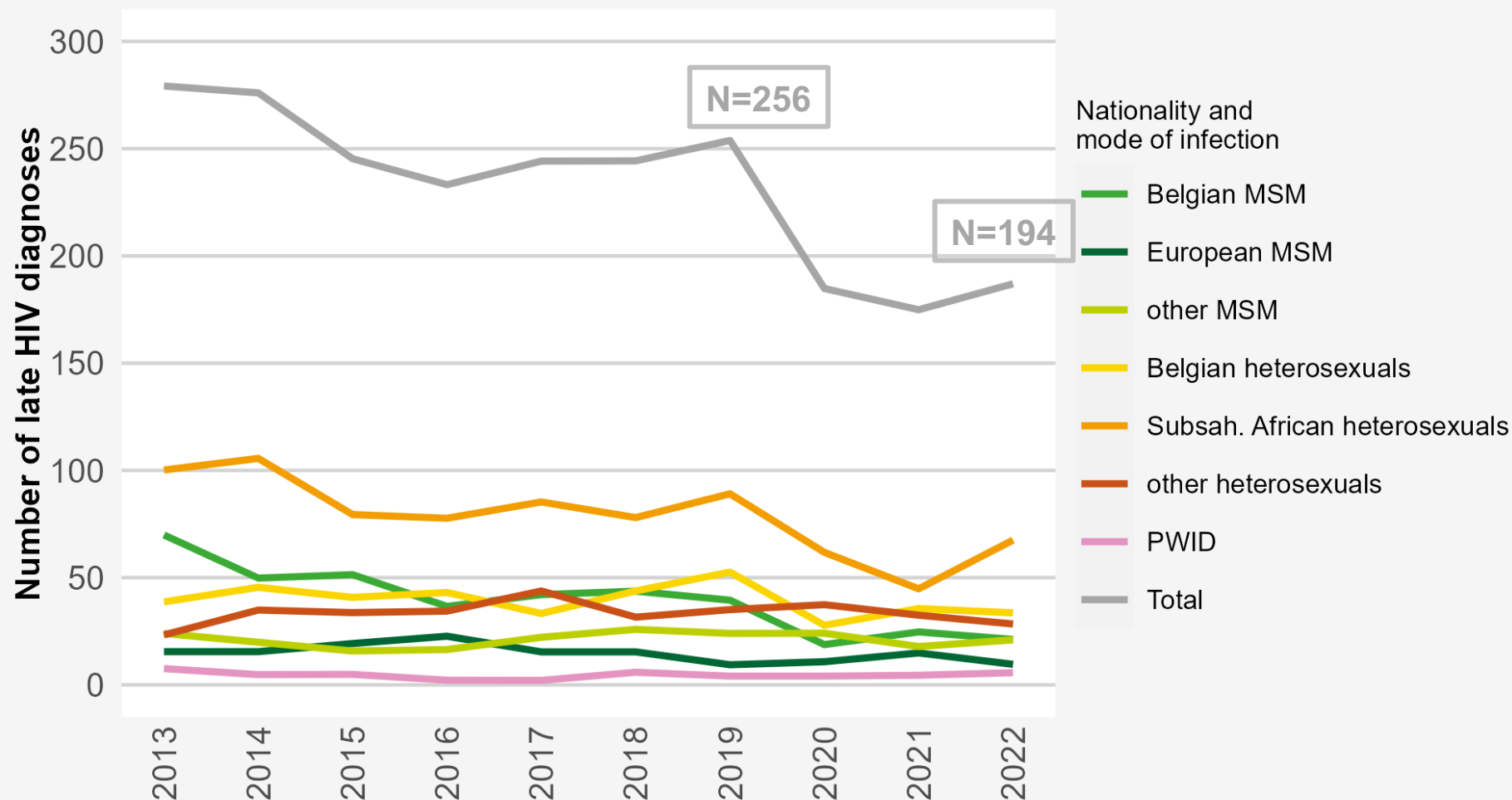
Number of HIV diagnoses among heterosexuals by nationalities and sex, and overall



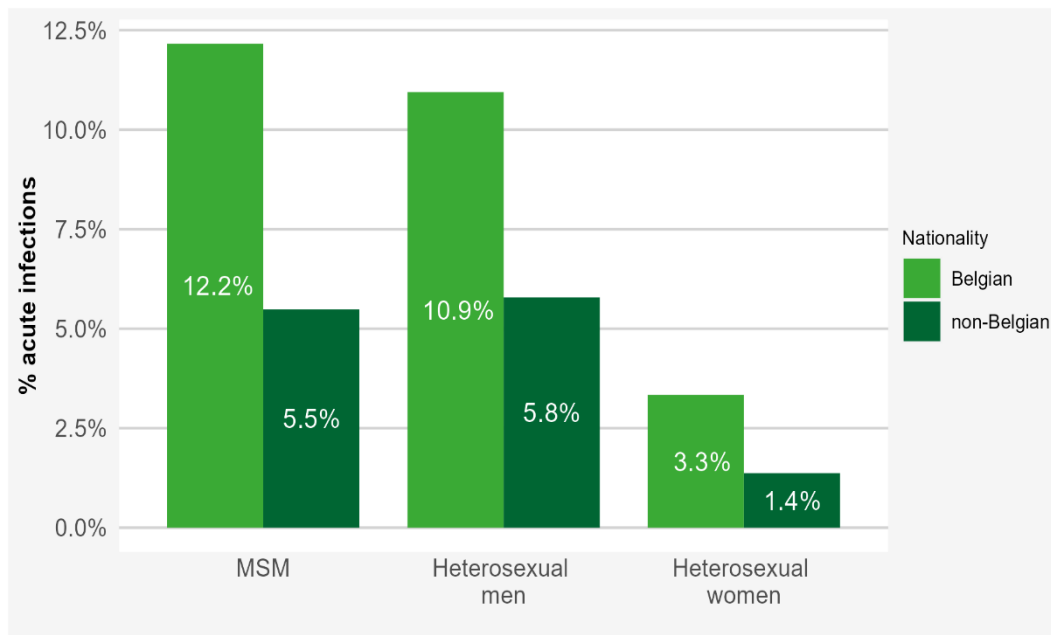
HIV new diagnoses (/100 000) per district of residence & sex, 2022



Timing of HIV diagnosis: late diagnoses

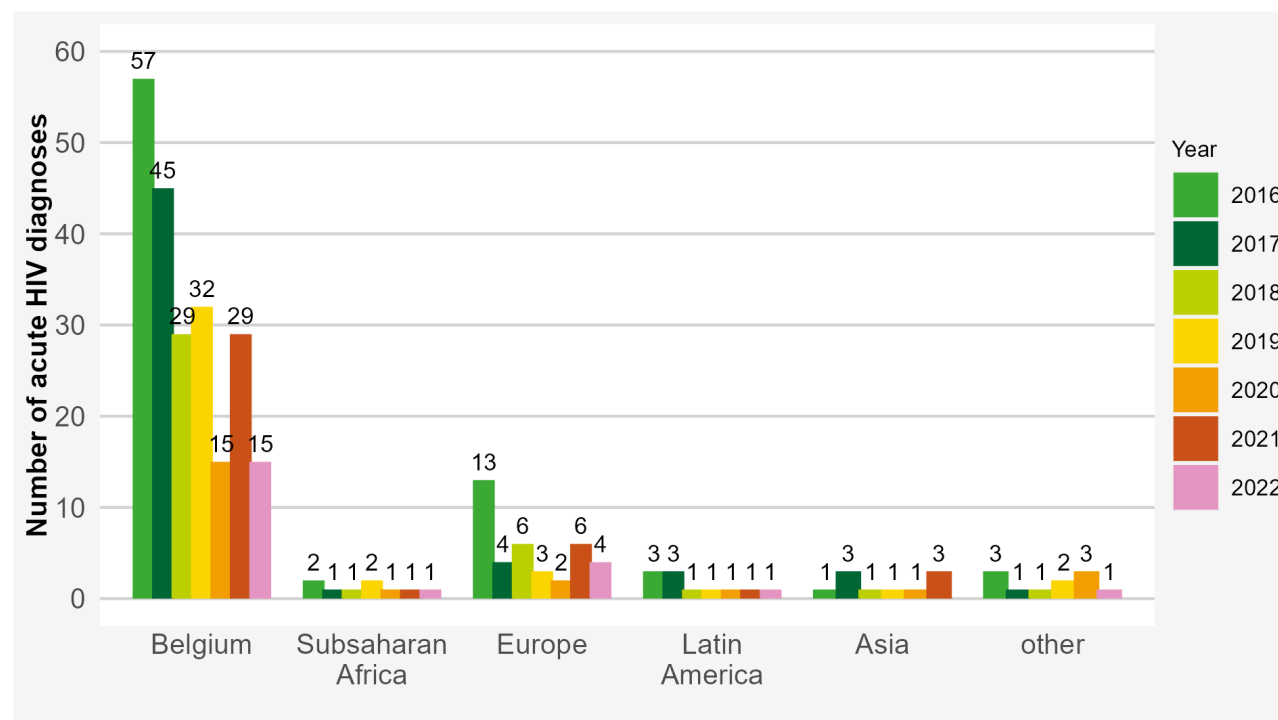


Timing of diagnosis: acute infections



Proportion of acute infections among HIV diagnoses, 2022

Number of acute infections among MSM 2016-2022

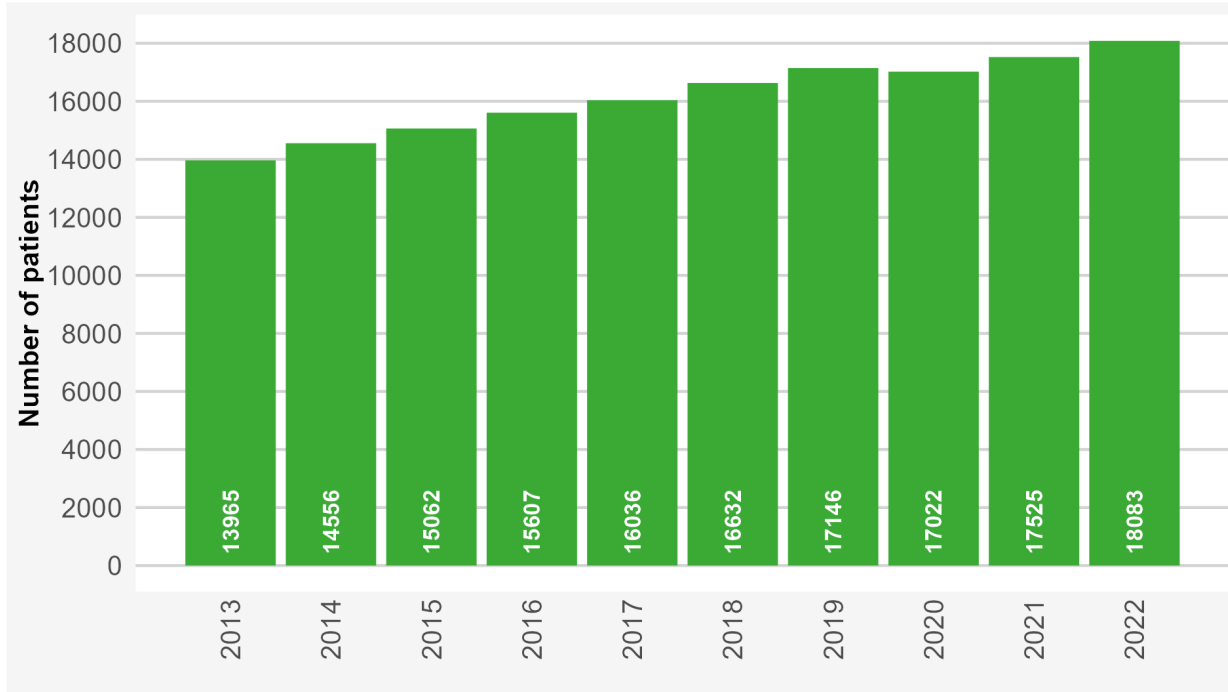


Pre-existing HIV diagnoses in 2022

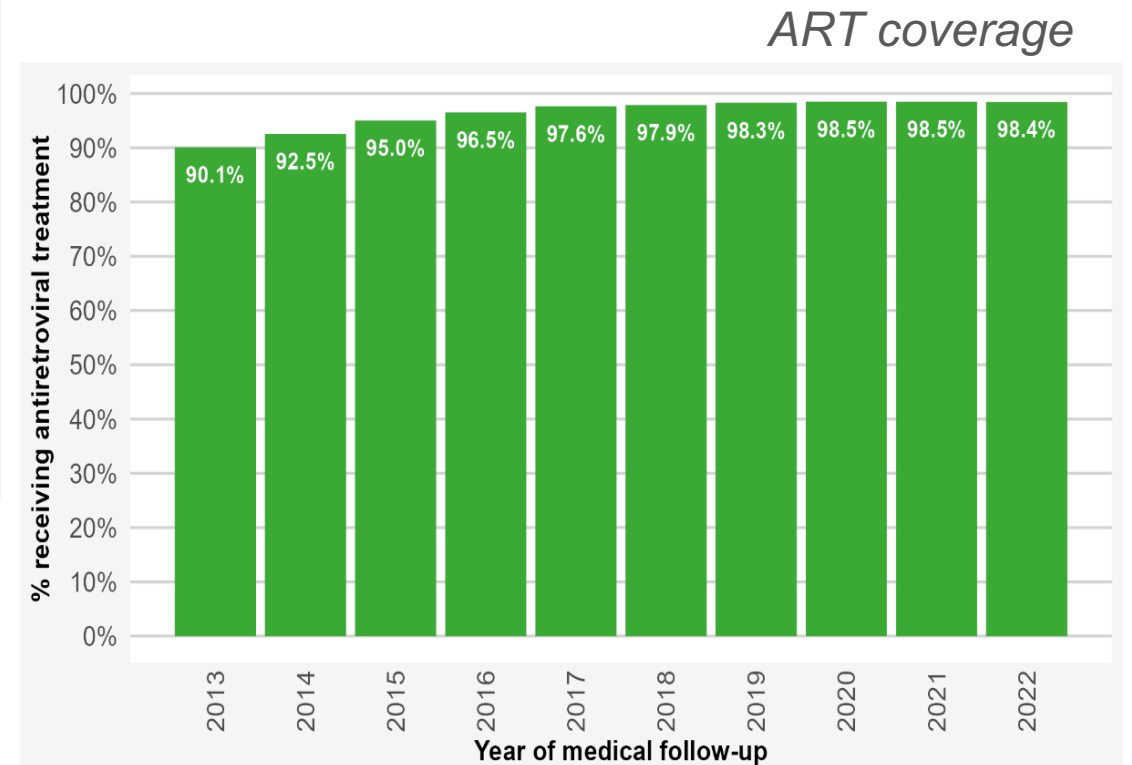
Persons with a diagnosis of HIV done abroad before first HIV confirmation in Belgium

- ❖ In 2022: 455
- ❖ Increasing number since around year 2000
- ❖ 92% with a foreign nationality:
 - ❖ 40% European of which 100 Ukrainians
 - ❖ 23% Sub-saharan Africans
 - ❖ 23% Latin-Americans
- ❖ 94% with evidence of ART already initiated at confirmation in Belgium

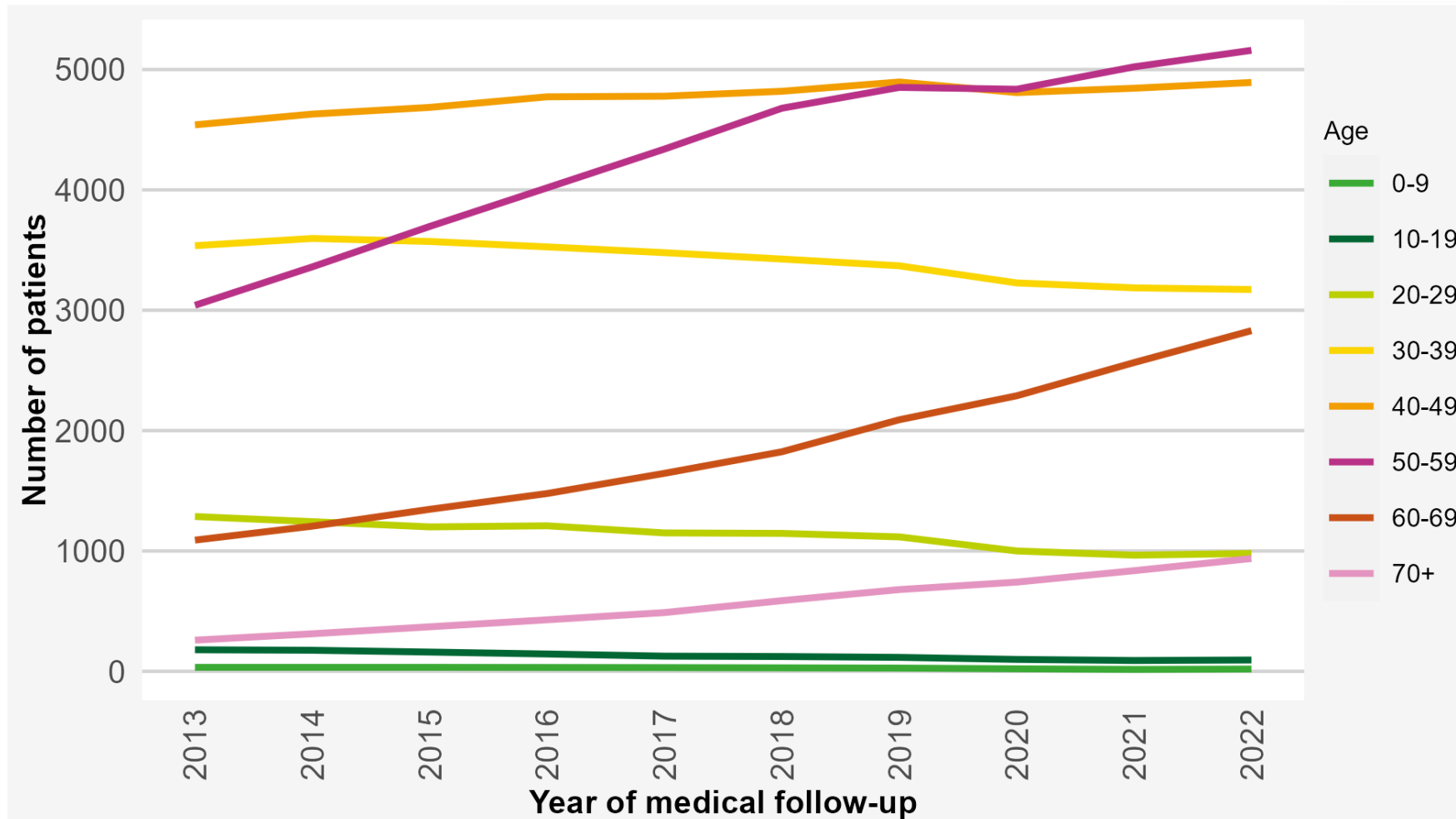
Number of patients in HIV care by year & ART coverage



Number of PWHIV in care

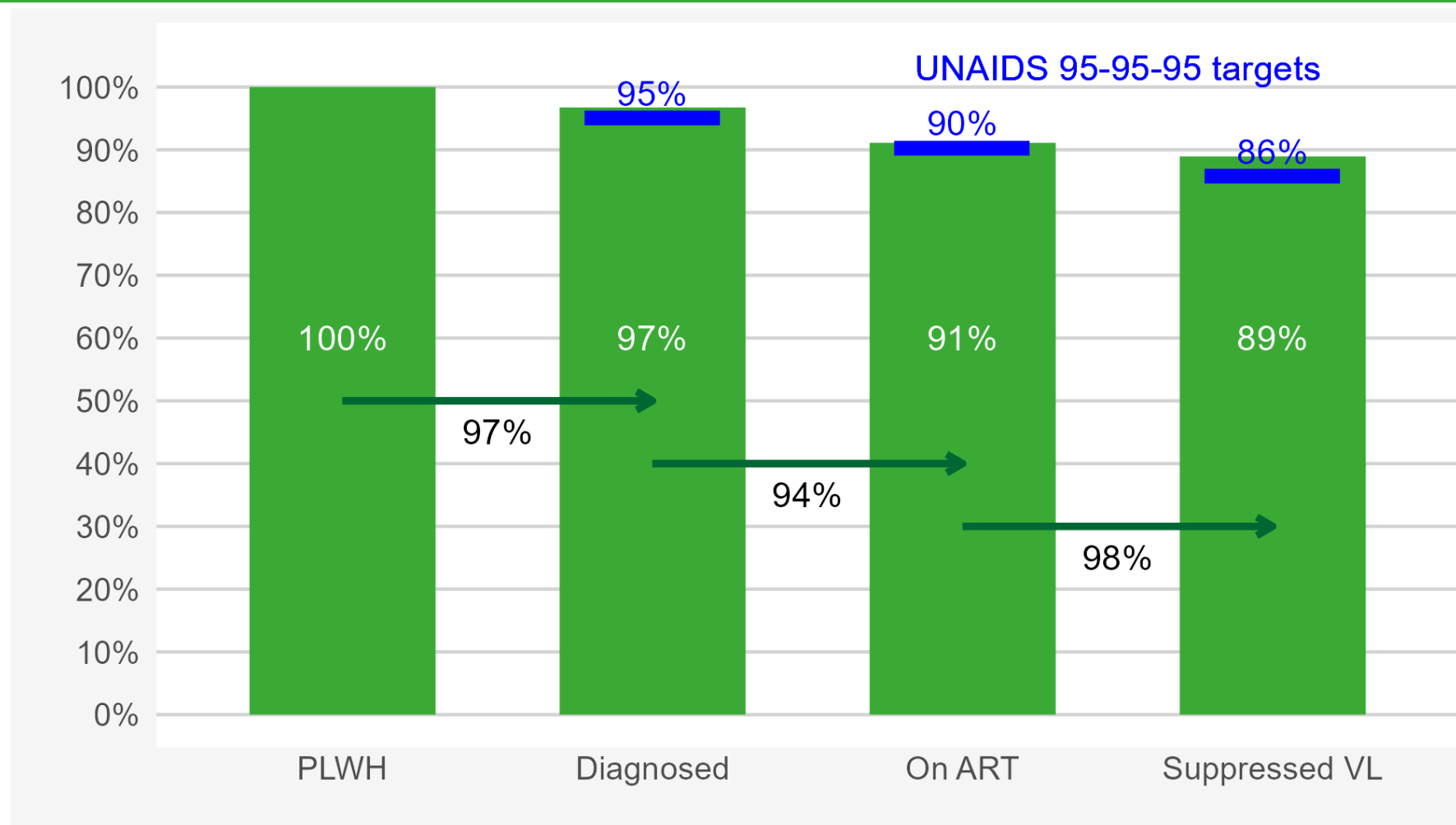


Number of PWHIV in care per age & year of HIV care

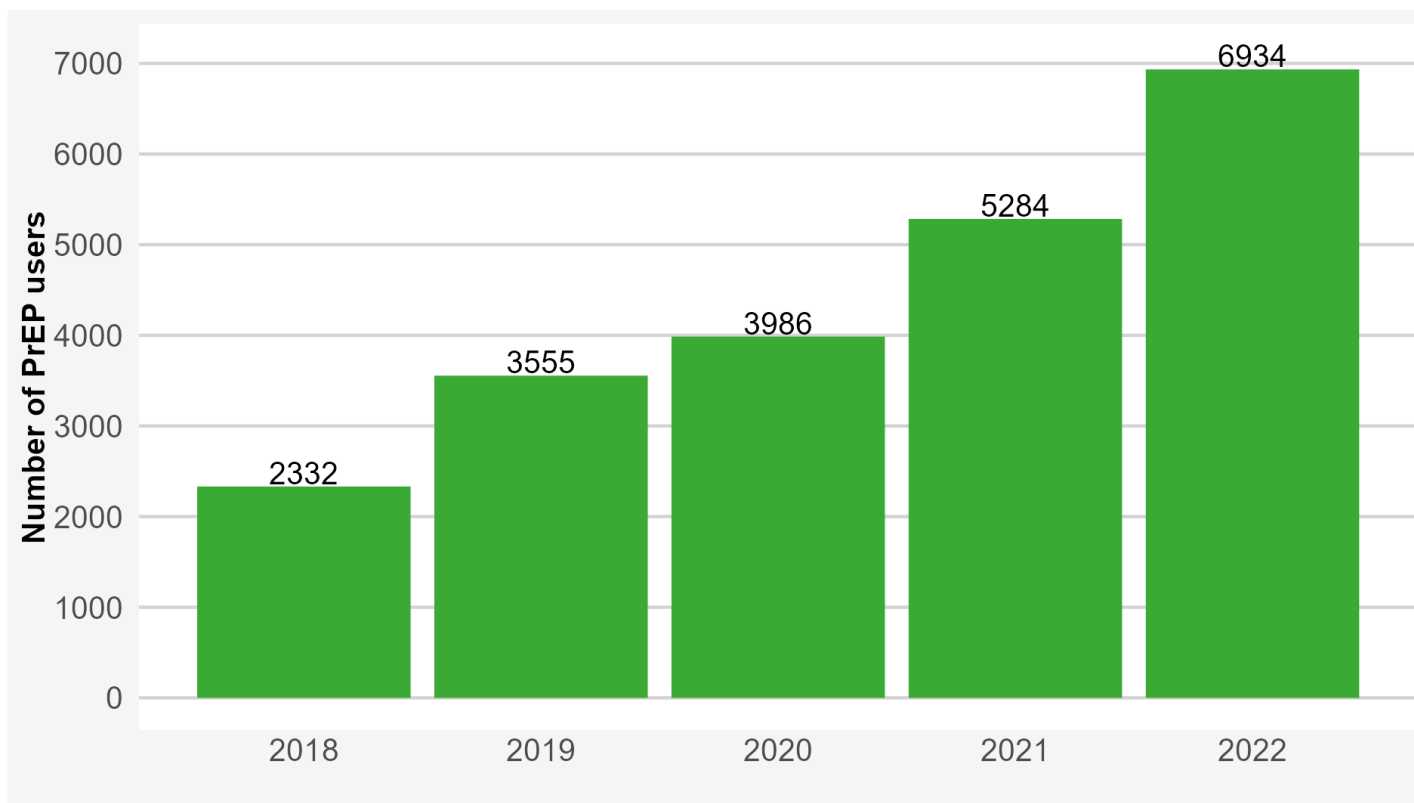


Estimates of the continuum of HIV care, 2022

- Total PWHIV 2022:
19 230



PrEP delivery & users profiles and outcomes



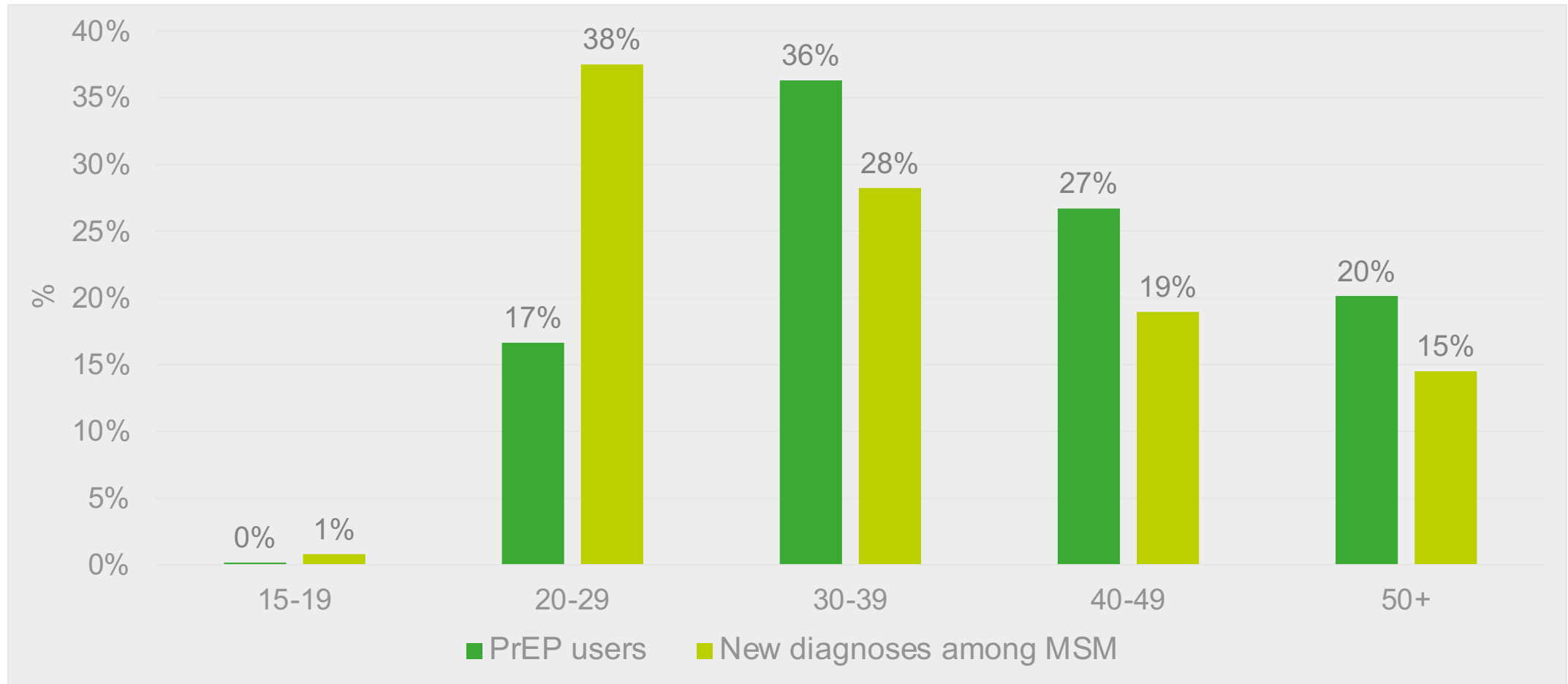
Source: Pharmanet – public pharmacies
Exclusive of hospital pharmacies (3% of PrEP pills in 2022)

In 2022:

- ❖ 98% MSM
- ❖ 73% Belgians
- ❖ 27% with at least one STI
 - ❖ 3% Mpox
- ❖ 7 HIV seroconversions (inconsistent use)
- ❖ Chemsex 20%

Source: HRC

Age distribution PrEP users & new HIV diagnoses among MSM, 2022

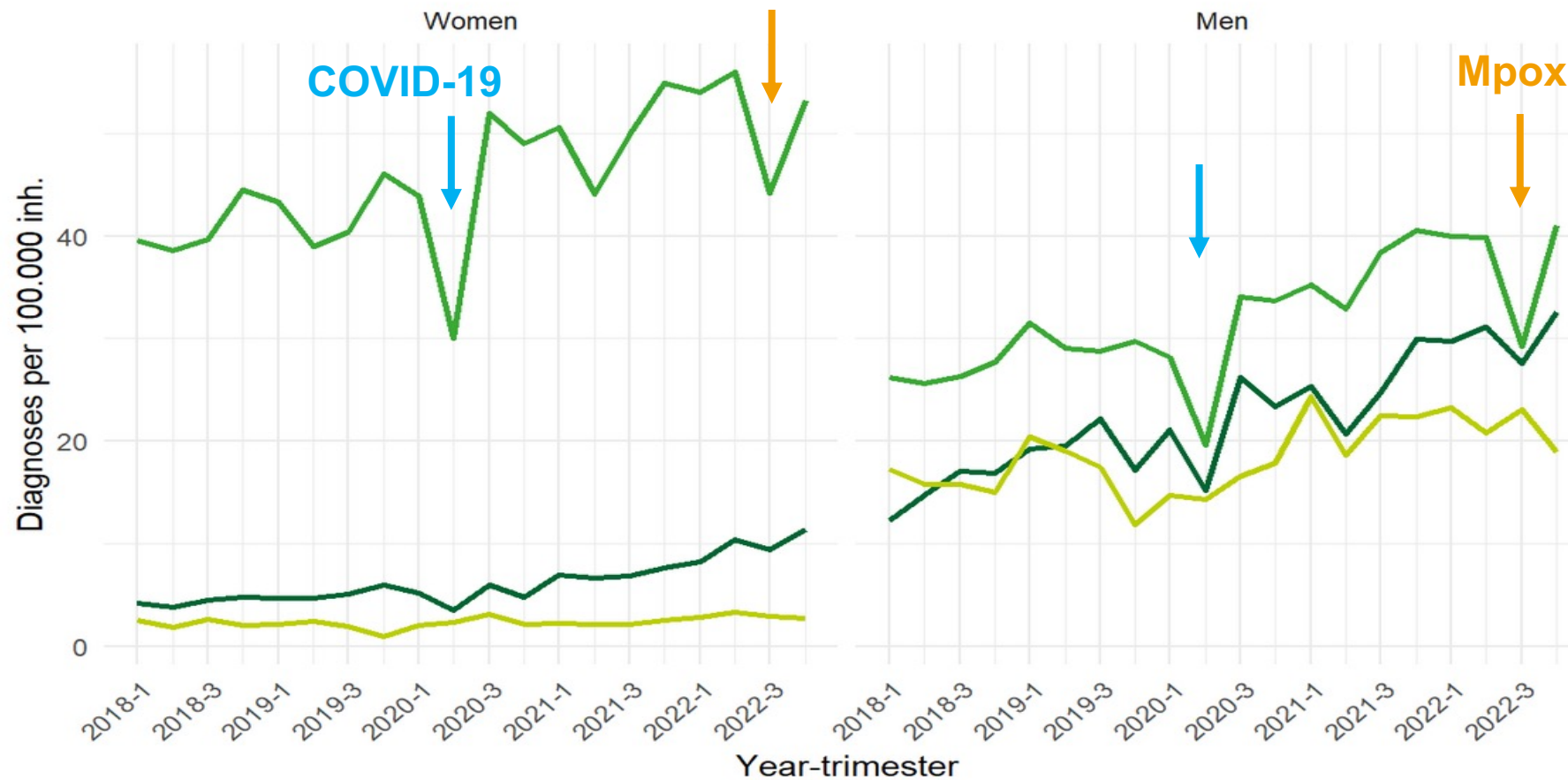


STI diagnoses per population, per trimester 2018-2022

PRELIMINARY RESULTS

STI diagnoses per 100.000 inh., Belgium, 2018-2022

Germ — Chlamydia trachomatis — Neisseria gonorrhoeae — Treponema pallidum

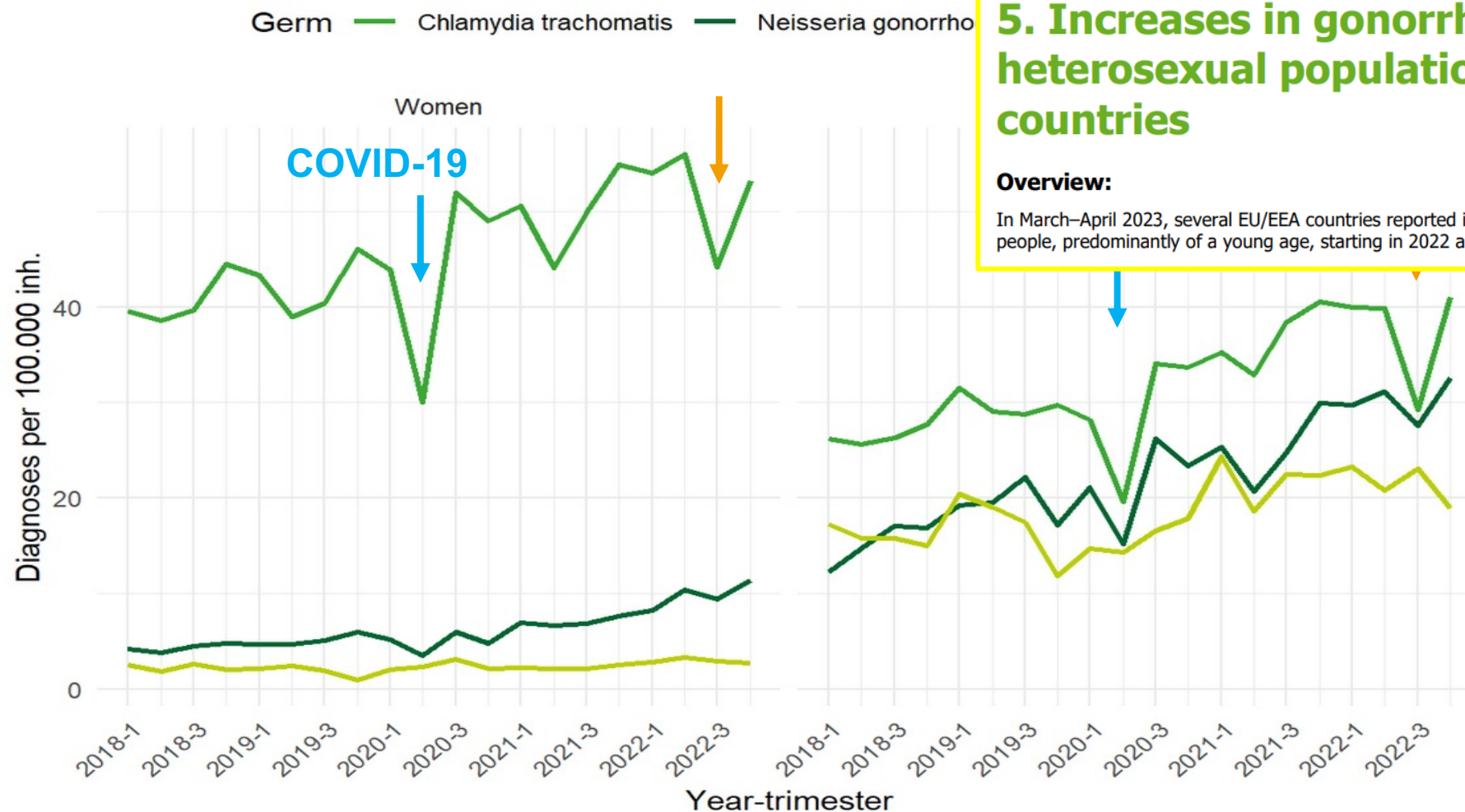


Selection of 26 sentinel microbiology laboratories reporting consistently

STI diagnoses per population, per trimester 2018-2022

PRELIMINARY RESULTS

STI diagnoses per 100.000 inh., Belgium, 2018-2022



5. Increases in gonorrhoea notification in heterosexual populations in EU/EEA countries

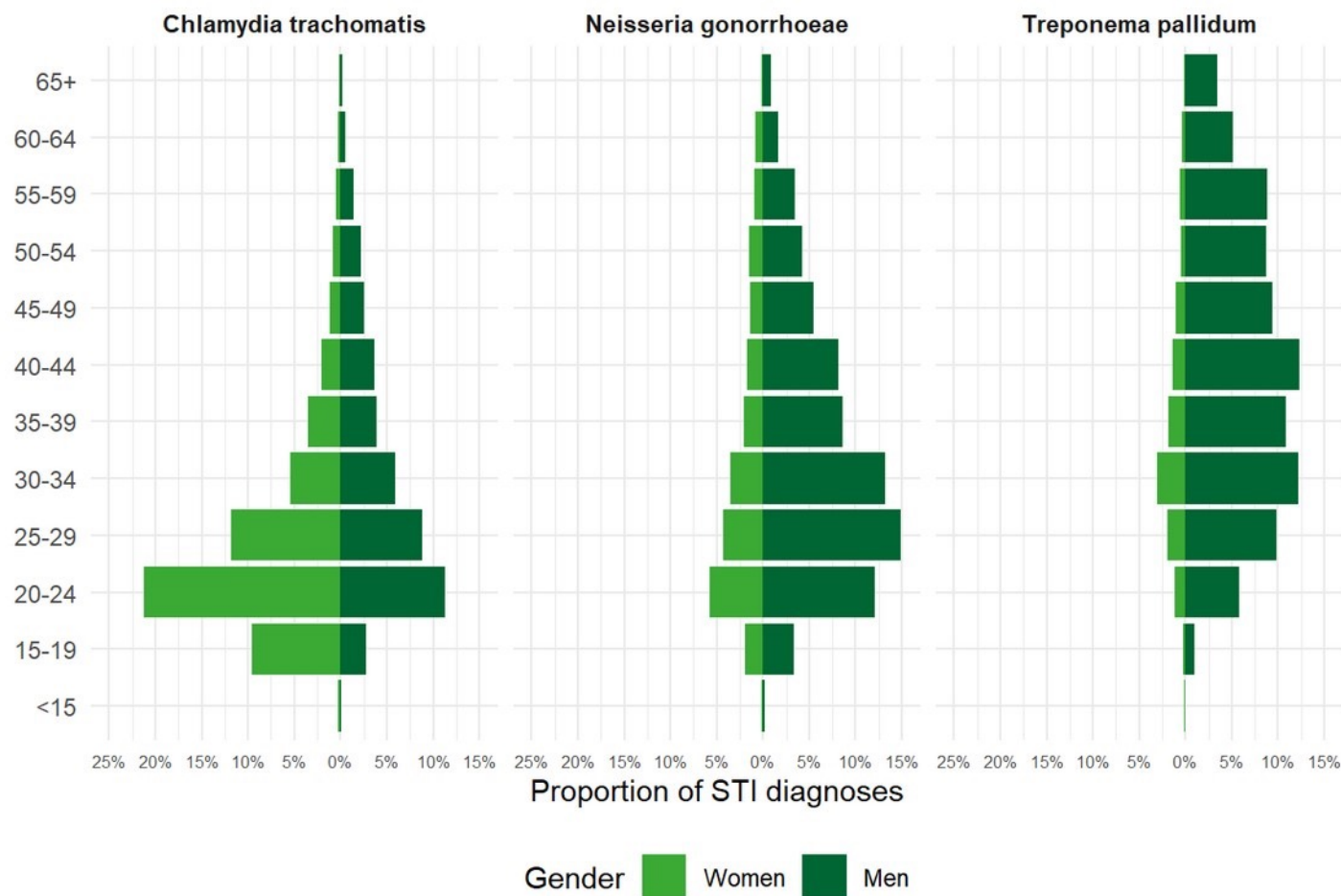
Overview:

In March–April 2023, several EU/EEA countries reported increases in gonorrhoea notifications among heterosexual people, predominantly of a young age, starting in 2022 and continuing in 2023.

Communicable Disease Threats Report, ECDC, 18-24 June 2023

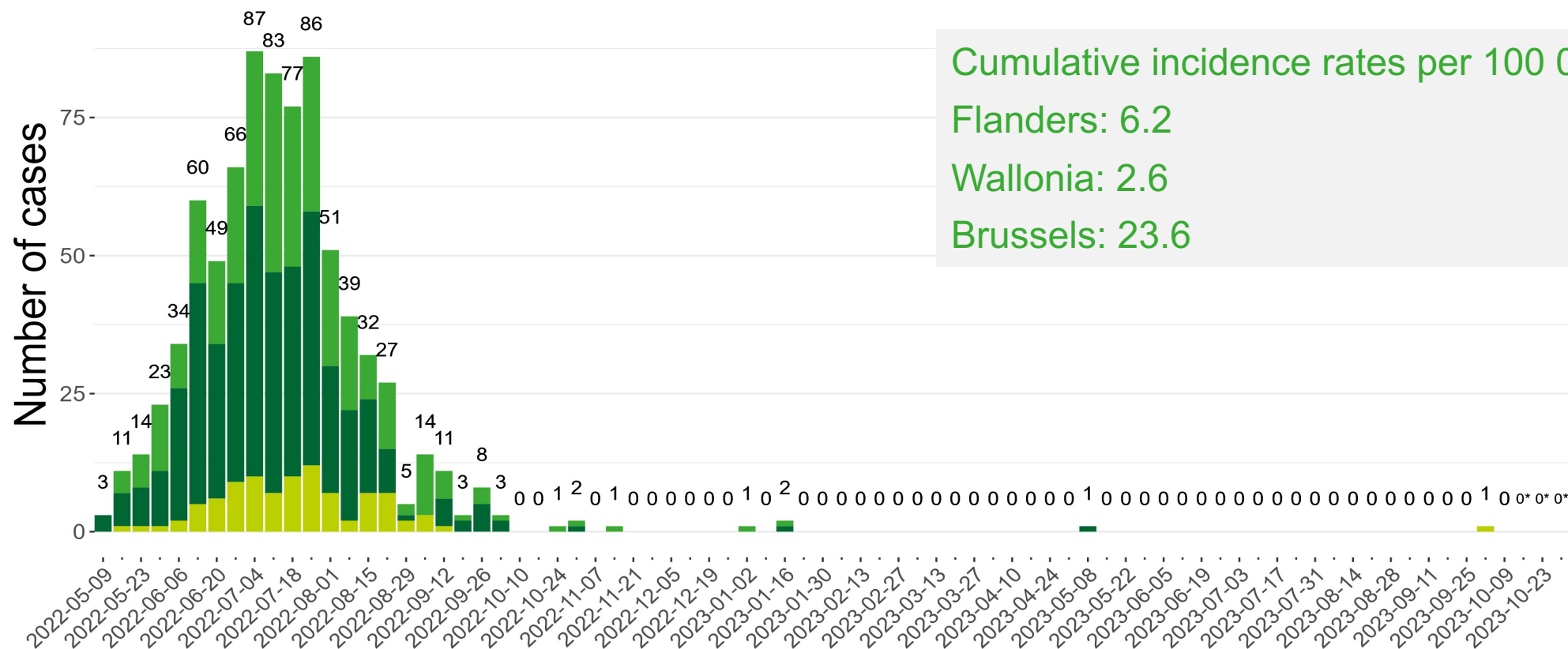
Age distribution per STI, 2022 - PRELIMINARY RESULTS*

Distribution of STI diagnoses by age and sex, Belgium, 2022



Mpox trends, 2022-23

Region ■ Brussels ■ Flanders ■ Wallonia



Key points I

- ❑ Sustained reduction in new diagnoses among MSM
 - ❑ Less acute HIV infections diagnosed
 - ❑ Sign of efficient prevention strategies
- ❑ But increase in MSM 20-29 years
 - ❑ Comparative lower coverage of 20-29 by PrEP delivery
 - ❑ Diversity in terms of nationalities
- **Special attention on young MSM:**
 - **Facilitate access & use of panel of prevention, including condom and PrEP**
 - **Ensure early testing : differentiated testing services**
 - **Sexual health education & information**

Key points II

- ❑ Sub-saharan African women = Important key population
- **Reduce barriers to early testing & sexual health talks**
 - **As gateway to prevention or care**
- ❑ Geographical differences: Brussels then other cities like Antwerp
- **High prevalence setting targeting**

- ❑ Gonorrhoea increase
 - **Work in progress to improve the completeness of STI reporting**
 - **Key prevention messages = condoms for vaginal, oral and anal sex & get tested for STIs if symptoms of an STI or sexual partner with an STI**

AMBITIOUS TARGETS AND COMMITMENTS FOR 2025

2025 HIV targets

10% < **END INEQUALITIES** > 95%

LESS THAN 10%
LESS THAN 10% OF PEOPLE LIVING
WITH HIV AND KEY POPULATIONS
EXPERIENCE STIGMA AND
DISCRIMINATION

LESS THAN 10%
OF PEOPLE LIVING WITH HIV,
WOMEN AND GIRLS AND KEY
POPULATIONS EXPERIENCE
GENDER-BASED INEQUALITIES
AND GENDER-BASED VIOLENCE

LESS THAN 10%
OF COUNTRIES HAVE PUNITIVE
LAWS AND POLICIES

*People living
with HIV and
communities at risk
at the centre*

95% OF PEOPLE AT RISK OF HIV
USE COMBINATION PREVENTION

95%–95%–95% HIV TESTING,
TREATMENT AND VIRAL SUPPRESSION
AMONG ADULTS AND CHILDREN

95% OF WOMEN ACCESS SEXUAL
AND REPRODUCTIVE HEALTH
SERVICES

95% COVERAGE OF SERVICES
FOR ELIMINATING VERTICAL
TRANSMISSION OF HIV

90% OF PEOPLE LIVING WITH HIV
RECEIVE PREVENTIVE TREATMENT
FOR TUBERCULOSIS

90% OF PEOPLE LIVING WITH HIV
AND PEOPLE AT RISK ARE LINKED
TO OTHER INTEGRATED HEALTH
SERVICES

*Thanks to the ARLs & HRCs
& Pharmanet & the annual report stakeholder
group*

HIV reports – up to end 2022

FR: <https://doi.org/10.25608/eznc-r584>

NL: <https://doi.org/10.25608/24dn-es90>

STI reports – up to end 2021

FR: <https://doi.org/10.25608/da1c-tm12>

NL: <https://doi.org/10.25608/rw4e-pe91>

Contact: HIV_STIsurveillance@Sciensano.be

